

# GP5000TE



GP5000TE series gasoline generating sets, 3000 rpm, sturdy and easy to handle, specially designed for professionals and yards. These generating sets have been designed with dedicated electrical panel with residual current protection and oversized protective rainproof cover. 3000 rpm gensets have been designed for stand-by use only. Not recommended using for more than 6 hours continuously or more than 500 hours/year



| PRIME POWER |          | STAND-BY POWER |            |
|-------------|----------|----------------|------------|
| kVA         | kW       | kVA            | kW         |
| <b>5</b>    | <b>4</b> | <b>5,5</b>     | <b>4,8</b> |

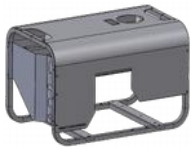
| WEIGHT    | DIMENSIONS |            |            |
|-----------|------------|------------|------------|
| kg        | L [mm]     | W [mm]     | H [mm]     |
| <b>78</b> | <b>825</b> | <b>550</b> | <b>530</b> |

All data can be found out in the original technical datasheet of the engine and the alternator. Values shown are nominal values, they can change in every moment and without warning.

## TECHNICAL DETAILS

|                              |                        |                            |                  |
|------------------------------|------------------------|----------------------------|------------------|
| <b>ELECTRICAL DATA</b>       | Electrical system type | 3F+N                       | ~                |
|                              | Power factor           | 0,8                        | φ                |
|                              | Voltage                | 400                        | V                |
|                              | Frequency              | 50                         | Hz               |
|                              | Ampere rating          | 7                          | A                |
| <b>ENGINE DATA</b>           | Engine                 | HONDA GX270                |                  |
|                              | Engine emissions       | STAGE V                    |                  |
|                              | Standards Engine power | 6,2 (4,6)                  | Hp (kW)          |
|                              | Rpm                    | 3000                       |                  |
|                              | Nr. of cylinders       | 1                          |                  |
|                              | Engine starting system | Electric starter           |                  |
|                              | Displacement           | 270                        | cc               |
| <b>FUEL CONSUMPTION DATA</b> | Fuel type              | Petrol                     |                  |
|                              | Consumption            | 1,6                        | liter/time @ 75% |
|                              | Tank capacity          | 15                         | liter/time       |
|                              | Autonomy               | 9,4                        | h                |
| <b>ALTERNATOR DATA</b>       | Alternator             | LINZ ELECTRIC – NSM        |                  |
|                              | Type                   | Self-excited, with brushes |                  |
|                              | Voltage regulation     | AVR                        |                  |
|                              | Voltage precision      | ± 1,5                      | %                |

## STANDARD EQUIPMENT



Steel base frame, epoxy powder painted



Bigger fuel tank for greater



autonomy Anti-vibration dampers



First filling liquids



Electric starting with 12V battery



Automatic voltage regulator (AVR)



Electric manual panel with multimeter and hour counter:  
-n.1 schuko and n.1 230V 16A 3P + n.1 400V 16A 5P  
ECC sockets  
-12VDC socket. MCB with residual current protection



Slow trolley for manual handling



Automatic mains failure panel  
-With integrated automatic transfer switch and battery charger